

ROVE
HOME
MEYDAN HORIZON

DEVELOPED BY

ALAIN

LIFE ON THE BRIGHT SIDE

From prime spots to sleek, modern designs, Rove Home Meydan Horizon flips the script on everyday living. Here, young-at-heart isn't just a saying; it's how we live. We wanted a place we'd love to call home, so we built exactly that.



ROVE HOTELS

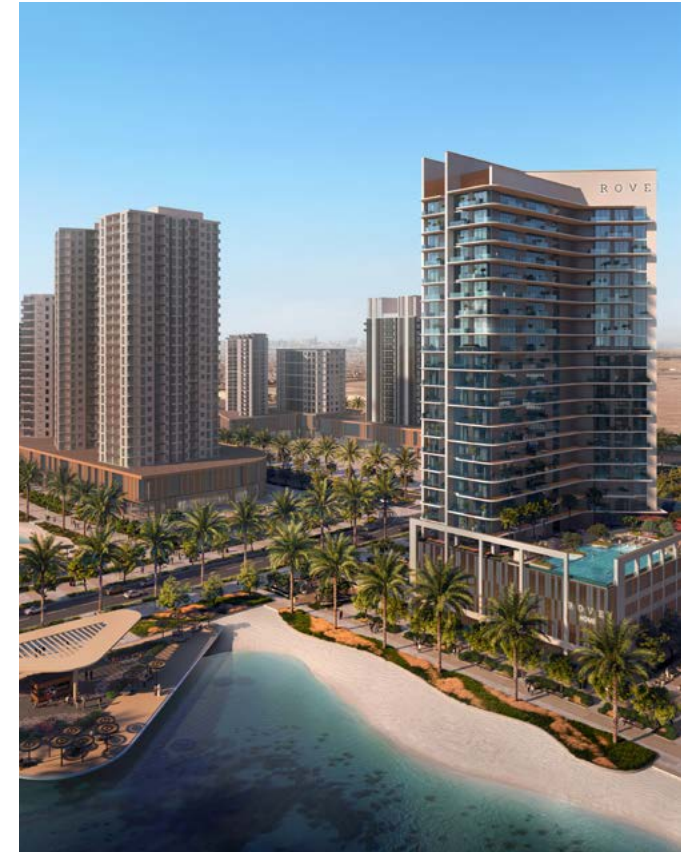
Centrally located and stylish, our hotels are the perfect jump-off point to explore the city from. A joint venture between Emaar Properties PJSC and Dubai Holding, Rove Hotels redefines the art of hospitality with a fresh, contemporary twist, featuring tech-savvy rooms and a range of amenities designed for ultimate convenience.



ROVE HOME

Our branded residences are for hassle-free living, creating distinct and personalised expressions of what your apartment and its surroundings should look and feel like. From prime locations, fully-loaded amenities, interiors that uplift and energise, and stylish yet cosy fully-furnished apartments, we decided that this is the kind of place where we'd like to live – so we set out to build exactly that.





ROVE HOME MEYDAN HORIZON

Rove Home Meydan Horizon redefines the rules on what modern living should feel like. Fully furnished 1- and 2-bedroom apartments come alive with smart layouts, stylish finishes and vibrant interiors designed to spark creativity and movement.

This is city living with personality, made effortless. From sweeping canal views to balconies that stretch your living outdoors, every detail is set to energise your everyday.

YOUR VIBE
FINDS ITS
TRIBE



IN THE HEART OF THE CITY



ROVE
HOME


ROVE


PERFECTLY PLACED IN MEYDAN


Set within Meydan, you're in one of Dubai's most connected new neighbourhoods. Just minutes from the city's biggest highlights, with seamless access to Sheikh Zayed Road and Al Khail Road.


Step outside to discover retail, dining, and leisure right on your doorstep, or explore Meydan's growing lifestyle hub with its cycling tracks, golf course, 2km lagoon and first-class leisure attractions, keeping you connected to everything that matters.


THE CITY AT YOUR DOORSTEP


- 

10 MINS
BURJ KHALIFA
- 

10 MINS
DOWNTOWN
- 

15 MINS
DIFC
- 

20 MINS
PALM JUMEIRAH
- 

20 MINS
DUBAI
INTERNATIONAL
AIRPORT
- 

25 MINS
DUBAI MARINA



ROVE





2KM LAGOON

DROP OFF



A BOLD CANVAS FOR YOUR EVERY DAY



COLOURED WITH CREATIVITY

Step inside and you'll find spaces that are full of character and easy to live in. Each fully-furnished one and two-bedroom apartment comes with smart layouts, stylish finishes, and everything you need to move straight in.

Think comfy sofas, statement lighting, and all the details that make a place feel like home and designed for real living.





KITCHEN AND DINING



BEDROOM



BATHROOM



BEDROOM



LIVING AND DINING

BEDROOM



ROVER



PACKED
WITH PERKS,
READY
TO ROVE

LIFE IN MOTION

At Rove Home Meydan Horizon, life is designed with choice in mind. From catching up over coffee in the Rove Café to focusing in the co-working lounge, every detail makes daily living effortless and enjoyable. When it's time to recharge, the options are endless; swim, stretch, or train at the pool, gym, or outdoor exercise area, enjoy a round of table tennis, jog along the track, or simply relax by the canal.



WELLNESS & FITNESS



OUTDOOR
YOGA



RUNNING
TRACK



OUTDOOR
EXERCISE
AREA



CABANAS &
SUN DECK



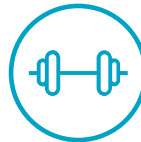
STEAM
ROOM



SWIMMING
POOL



JACUZZI



GYM



COMMUNITY



MULTI
FUNCTIONAL
ROOM



CO-WORKING
& MEETING
ROOMS



WORKING
PODS



RESIDENTS'
LOUNGE



GAMES'
TABLE



ENTERTAINMENT



PUTTING
GREEN



OUTDOOR
CINEMA



CONVENIENCE



24/7
CONCIERGE



RECEPTION



ROVE
CONNECT



ROVE
CAFE



KITCHEN /
DINING ROOM



FREE WIFI IN
PUBLIC SPACES





SWIMMING POOL



POOL DECK





CO-WORKING TERRACE



OUTDOOR CINEMA AND GAMING



PUTTING GREEN



RUNNING TRACK



ROVE CAFÉ



GYM



LOUNGE



CO-WORKING SPACE



CONCIERGE



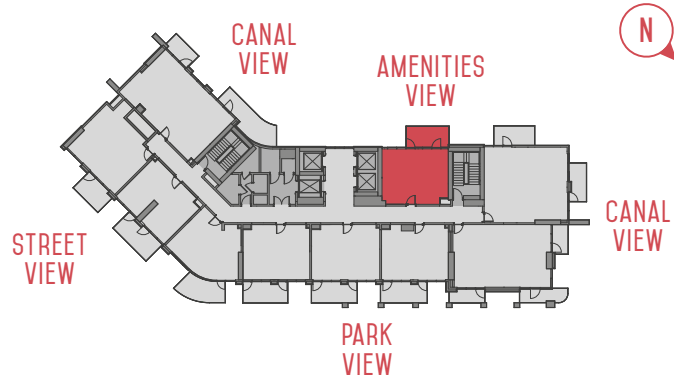
GAMING ROOM

DESIGNED
WITH LOVE,
LIVED
WITH EASE



1 BED TYPE A

1. ENTRANCE	
2. KITCHEN & DINING AREA	2.45 X 2.85M
3. LIVING ROOM	3.75 X 3.05M
4. BEDROOM	3.25 X 3.70M
5. BATHROOM	2.10 X 2.20M
6. LAUNDRY	0.90 X 0.60M
7. BALCONY	4.70 X 2.30M



INTERNAL AREA 502 SQ FT

BALCONY AREA 115 SQ FT

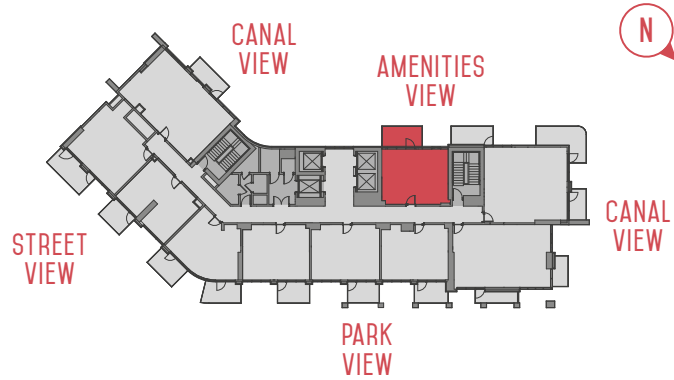
TOTAL AREA 617 SQ FT

Disclaimer: All images, plans, features, and specifications are for illustrative purposes only and subject to change without notice. Final details, dimensions, and inclusions may vary. Items shown—such as furniture, appliances, finishes, pools, and landscaping—are not included unless stated. Masterplans and renderings are preliminary and not binding. The Sale and Purchase Agreement and Offering Plan govern final terms. The Developer may substitute materials or components with equal or superior quality at its discretion.

1 BED

TYPE B

1. ENTRANCE	
2. KITCHEN & DINING AREA	2.45 X 2.85M
3. LIVING ROOM	3.75 X 3.05M
4. BEDROOM	3.25 X 3.70M
5. BATHROOM	2.10 X 2.20M
6. LAUNDRY	0.90 X 0.60M
7. BALCONY	4.40 X 2.30M



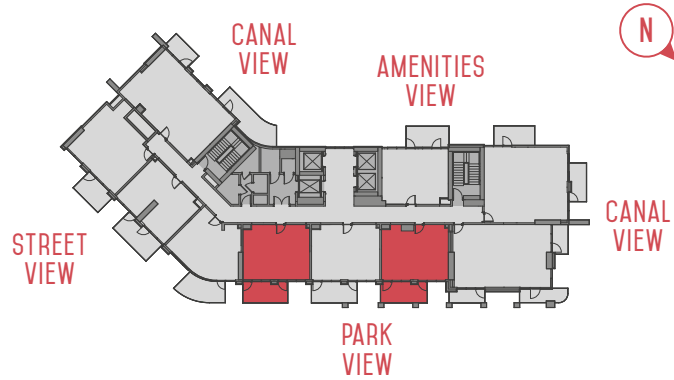
INTERNAL AREA 502 SQ FT BALCONY AREA 108 SQ FT TOTAL AREA 610 SQ FT

Disclaimer: All images, plans, features, and specifications are for illustrative purposes only and subject to change without notice. Final details, dimensions, and inclusions may vary. Items shown—such as furniture, appliances, finishes, pools, and landscaping—are not included unless stated. Masterplans and renderings are preliminary and not binding. The Sale and Purchase Agreement and Offering Plan govern final terms. The Developer may substitute materials or components with equal or superior quality at its discretion.

1 BED

TYPE C

1. ENTRANCE	
2. KITCHEN & DINING AREA	2.45 X 2.80M
3. LIVING ROOM	3.75 X 3.10M
4. BEDROOM	3.30 X 3.70M
5. BATHROOM	2.15 X 2.20M
6. LAUNDRY	0.90 X 0.60M
7. BALCONY	4.85 X 2.30M

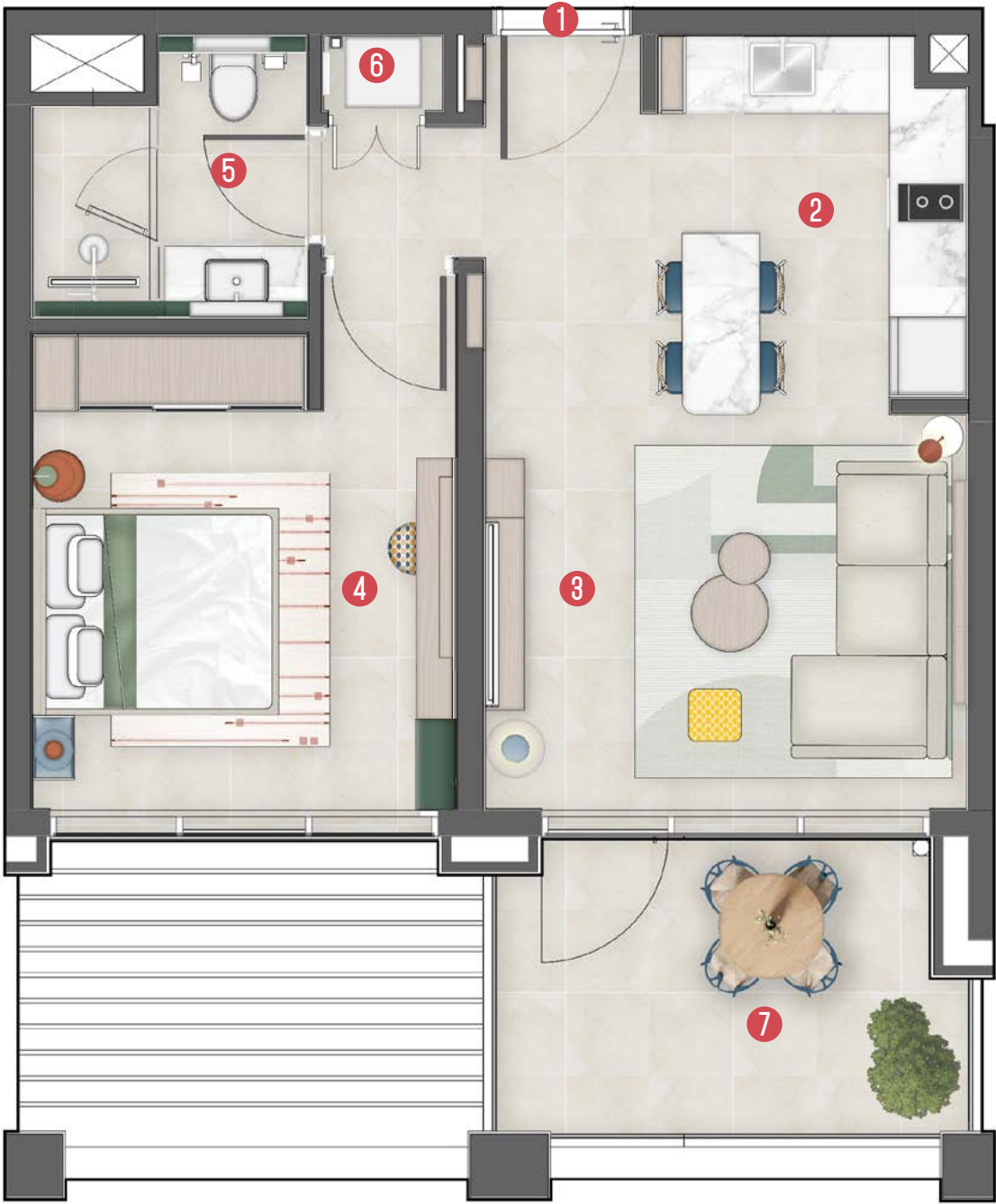
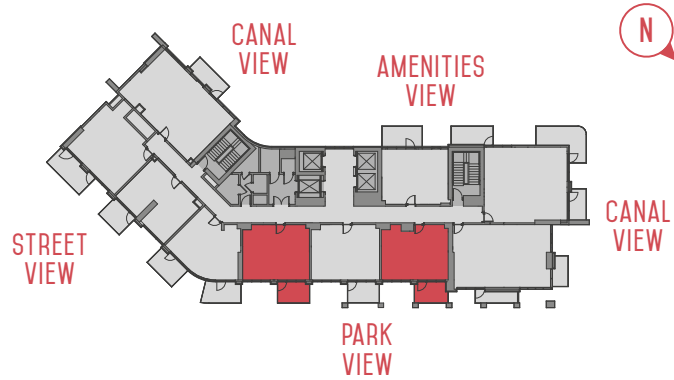


INTERNAL AREA 502 SQ FT BALCONY AREA 122 SQ FT TOTAL AREA 624 SQ FT

Disclaimer: All images, plans, features, and specifications are for illustrative purposes only and subject to change without notice. Final details, dimensions, and inclusions may vary. Items shown—such as furniture, appliances, finishes, pools, and landscaping—are not included unless stated. Masterplans and renderings are preliminary and not binding. The Sale and Purchase Agreement and Offering Plan govern final terms. The Developer may substitute materials or components with equal or superior quality at its discretion.

1 BED TYPE D

1. ENTRANCE	
2. KITCHEN & DINING AREA	2.45 X 2.80M
3. LIVING ROOM	3.75 X 3.10M
4. BEDROOM	3.30 X 3.70M
5. BATHROOM	2.15 X 2.20M
6. LAUNDRY	0.90 X 0.60M
7. BALCONY	3.50 X 2.30M

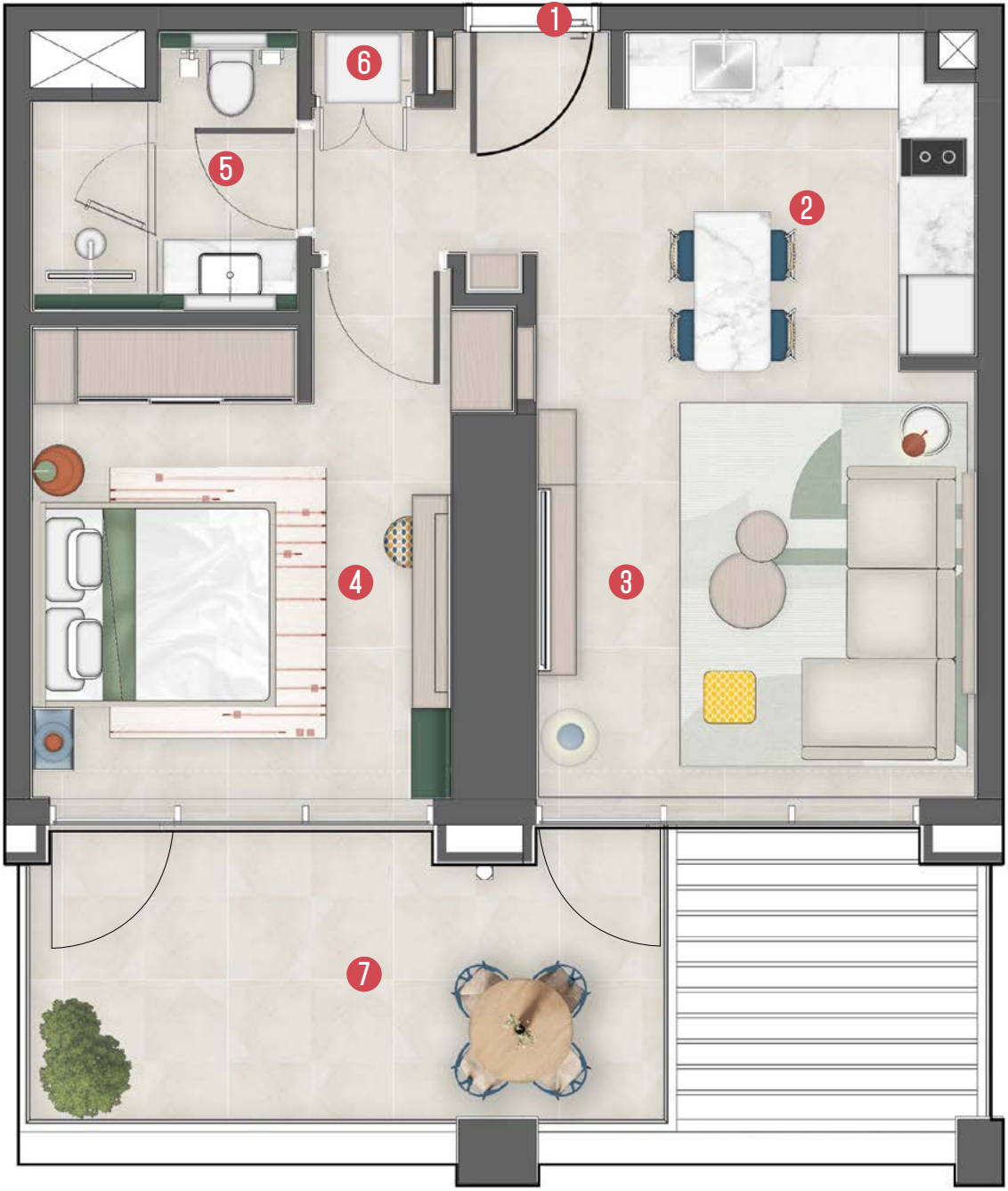
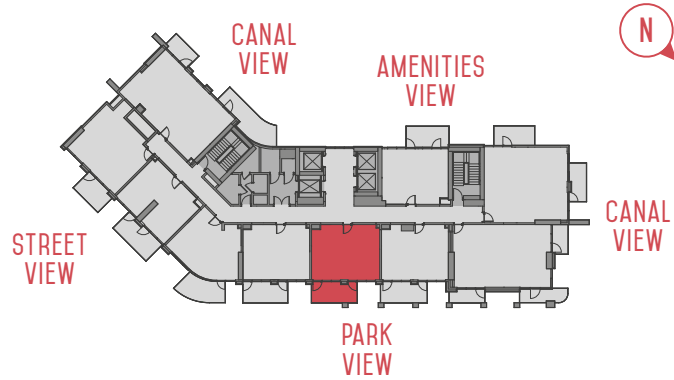


INTERNAL AREA 502 SQ FT BALCONY AREA 87 SQ FT TOTAL AREA 589 SQ FT

Disclaimer: All images, plans, features, and specifications are for illustrative purposes only and subject to change without notice. Final details, dimensions, and inclusions may vary. Items shown—such as furniture, appliances, finishes, pools, and landscaping—are not included unless stated. Masterplans and renderings are preliminary and not binding. The Sale and Purchase Agreement and Offering Plan govern final terms. The Developer may substitute materials or components with equal or superior quality at its discretion.

1 BED TYPE E

1. ENTRANCE	
2. KITCHEN & DINING AREA	2.75 X 2.55M
3. LIVING ROOM	3.45 X 3.35M
4. BEDROOM	3.30 X 3.75M
5. BATHROOM	2.10 X 2.20M
6. LAUNDRY	0.80 X 0.50M
7. BALCONY	5.00 X 2.30M



INTERNAL AREA

504 SQ FT

BALCONY AREA

123 SQ FT

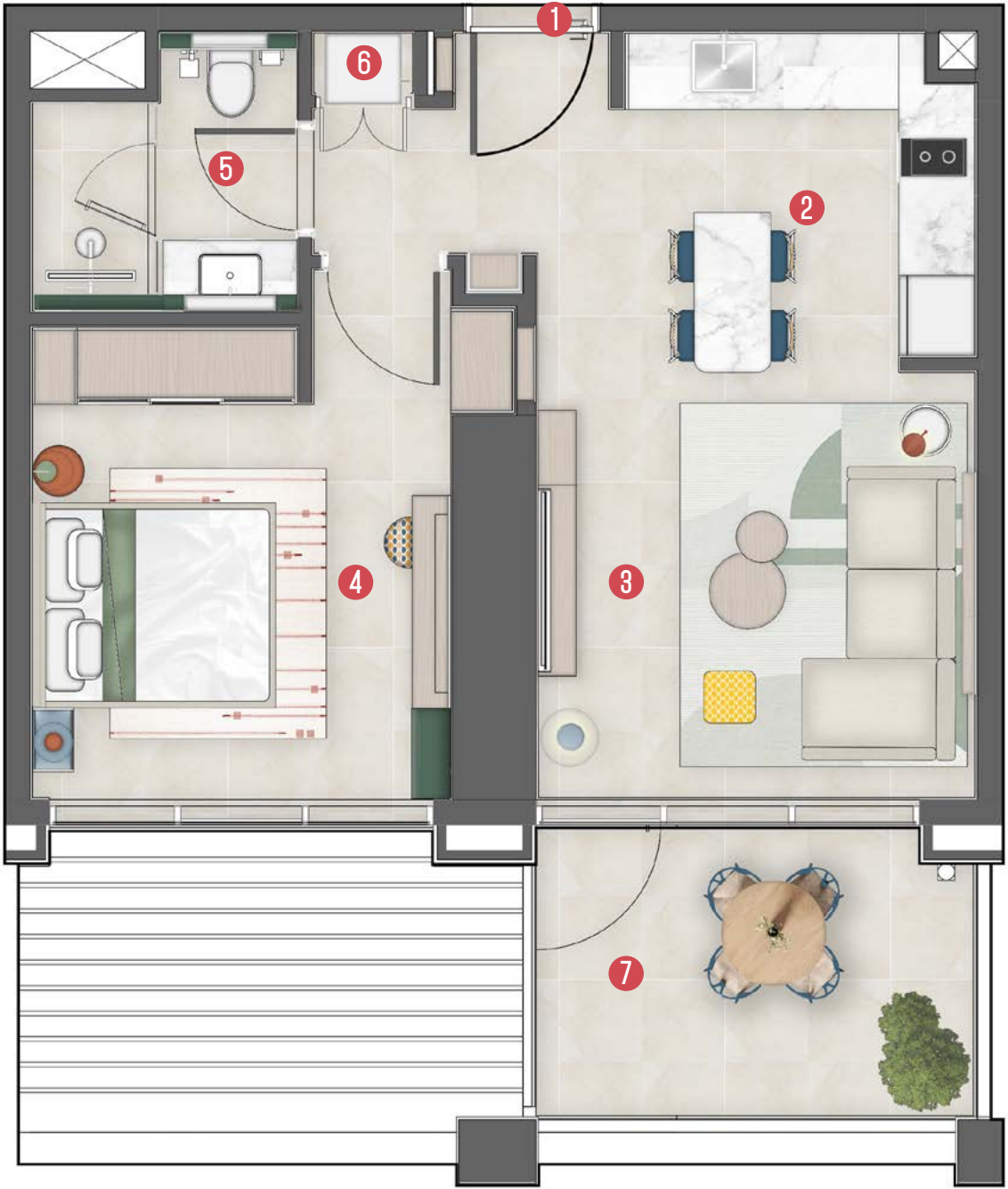
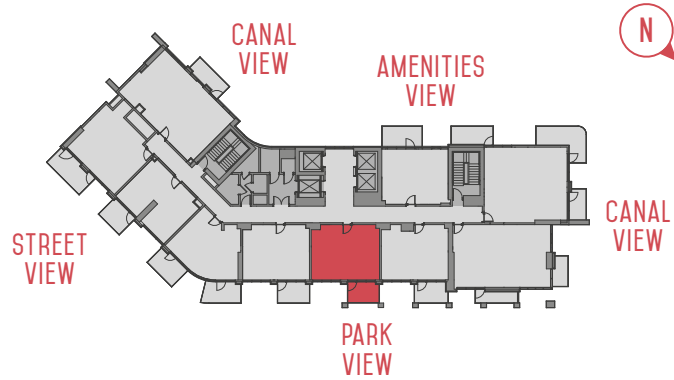
TOTAL AREA

627 SQ FT

Disclaimer: All images, plans, features, and specifications are for illustrative purposes only and subject to change without notice. Final details, dimensions, and inclusions may vary. Items shown—such as furniture, appliances, finishes, pools, and landscaping—are not included unless stated. Masterplans and renderings are preliminary and not binding. The Sale and Purchase Agreement and Offering Plan govern final terms. The Developer may substitute materials or components with equal or superior quality at its discretion.

1 BED TYPE F

1. ENTRANCE	
2. KITCHEN & DINING AREA	2.75 X 2.55M
3. LIVING ROOM	3.45 X 3.35M
4. BEDROOM	3.30 X 3.75M
5. BATHROOM	2.10 X 2.20M
6. LAUNDRY	0.80 X 0.50M
7. BALCONY	3.45 X 2.30M



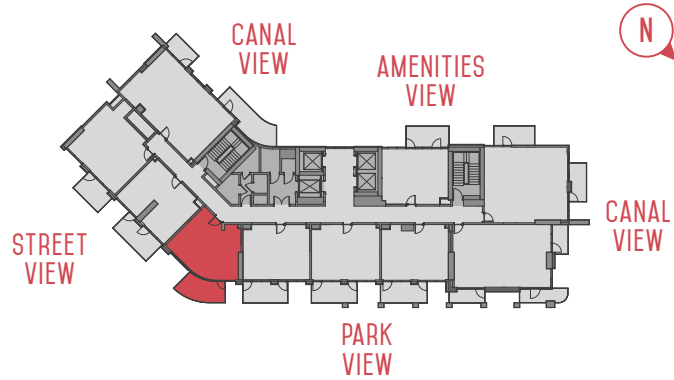
INTERNAL AREA 504 SQ FT BALCONY AREA 84 SQ FT TOTAL AREA 588 SQ FT

Disclaimer: All images, plans, features, and specifications are for illustrative purposes only and subject to change without notice. Final details, dimensions, and inclusions may vary. Items shown—such as furniture, appliances, finishes, pools, and landscaping—are not included unless stated. Masterplans and renderings are preliminary and not binding. The Sale and Purchase Agreement and Offering Plan govern final terms. The Developer may substitute materials or components with equal or superior quality at its discretion.

1 BED

TYPE G

1. ENTRANCE	
2. KITCHEN & DINING AREA	3.40 X 2.65M
3. LIVING ROOM	3.70 X 3.95M
4. BEDROOM	3.45 X 3.85M
5. DRESSING AREA	3.45 X 3.85M
6. BATHROOM	2.35 X 2.70M
7. LAUNDRY	0.65 X 1.25M
8. BALCONY	3.80 X 2.50M



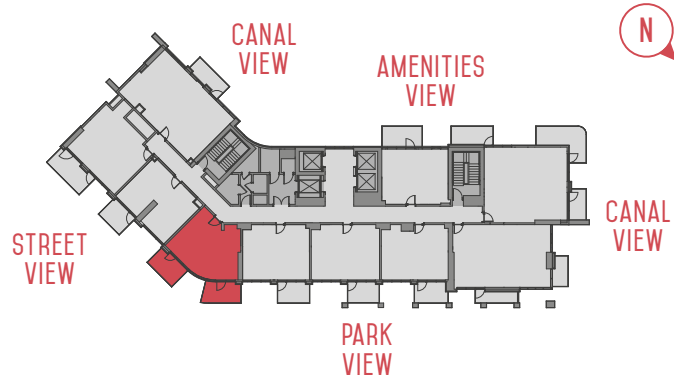
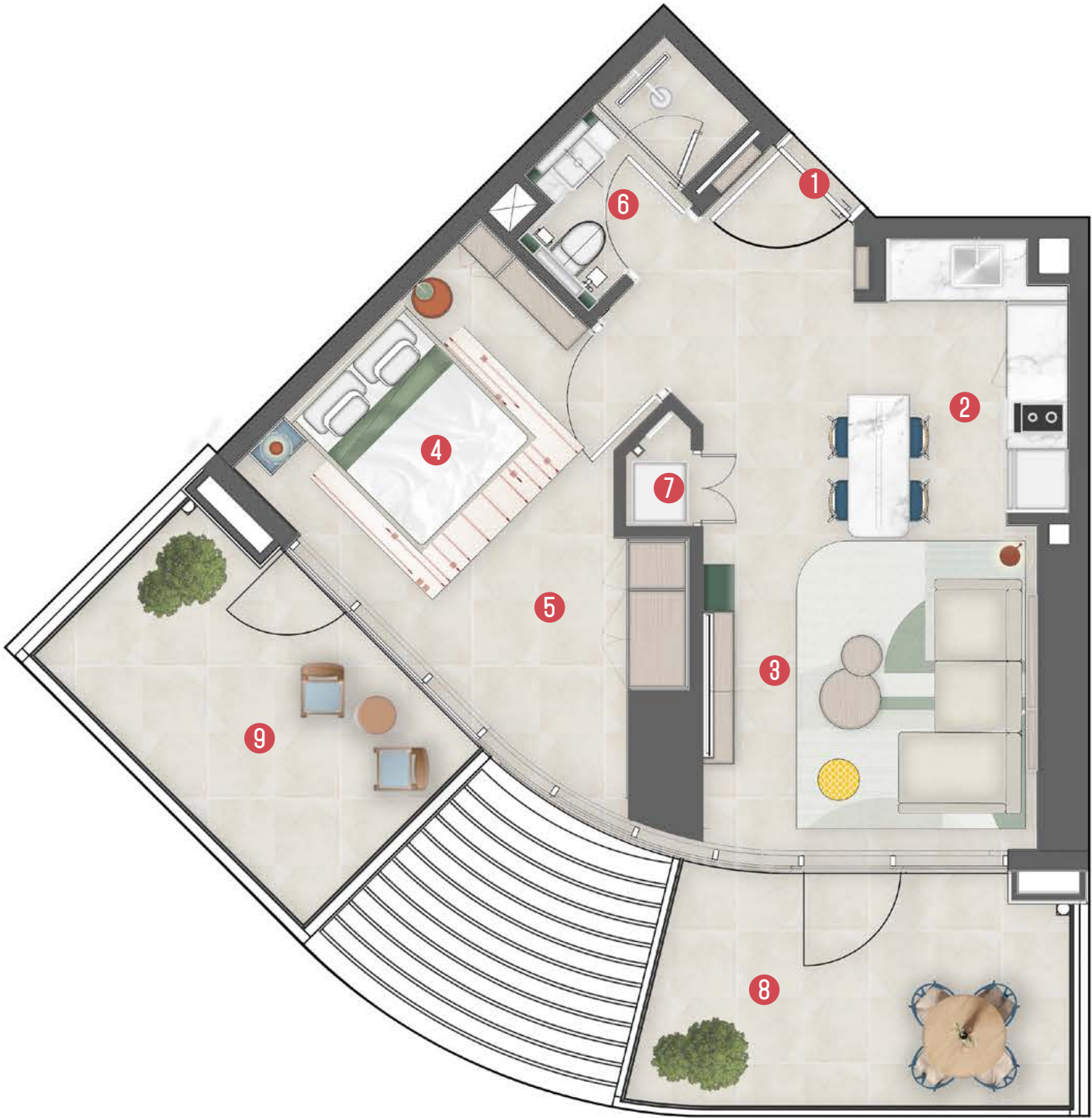
INTERNAL AREA	489 SQ FT	BALCONY AREA	114 SQ FT	TOTAL AREA	603 SQ FT
---------------	-----------	--------------	-----------	------------	-----------

Disclaimer: All images, plans, features, and specifications are for illustrative purposes only and subject to change without notice. Final details, dimensions, and inclusions may vary. Items shown—such as furniture, appliances, finishes, pools, and landscaping—are not included unless stated. Masterplans and renderings are preliminary and not binding. The Sale and Purchase Agreement and Offering Plan govern final terms. The Developer may substitute materials or components with equal or superior quality at its discretion.

1 BED

TYPE H

1. ENTRANCE	
2. KITCHEN & DINING AREA	3.40 X 2.65M
3. LIVING ROOM	3.70 X 3.95M
4. BEDROOM	3.45 X 3.85M
5. DRESSING AREA	3.45 X 3.85M
6. BATHROOM	2.35 X 2.70M
7. LAUNDRY	0.65 X 1.25M
8. BALCONY 1	4.10 X 2.50M
9. BALCONY 2	3.75 X 2.50M

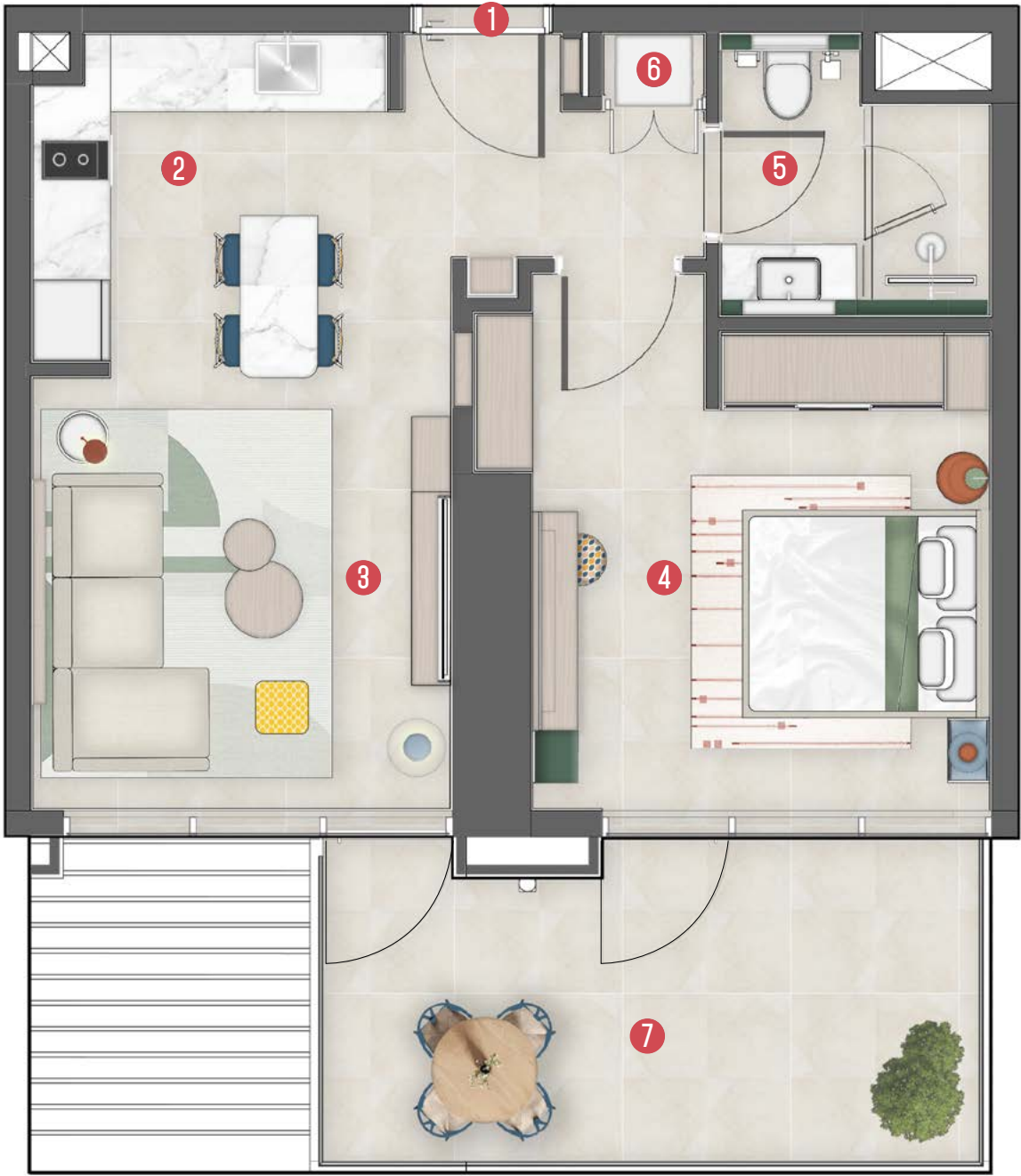
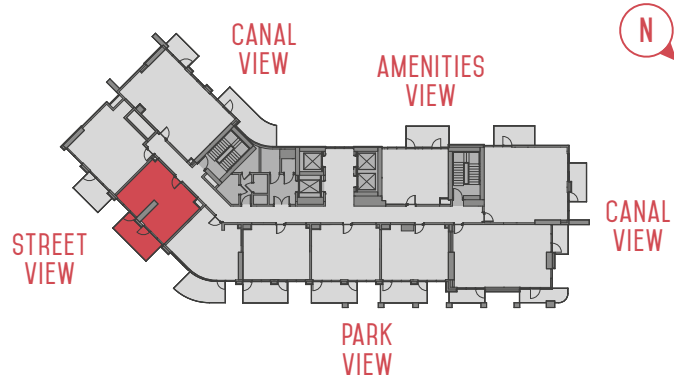


INTERNAL AREA 489 SQ FT BALCONY AREA 200 SQ FT TOTAL AREA 689 SQ FT

Disclaimer: All images, plans, features, and specifications are for illustrative purposes only and subject to change without notice. Final details, dimensions, and inclusions may vary. Items shown—such as furniture, appliances, finishes, pools, and landscaping—are not included unless stated. Masterplans and renderings are preliminary and not binding. The Sale and Purchase Agreement and Offering Plan govern final terms. The Developer may substitute materials or components with equal or superior quality at its discretion.

1 BED TYPE I

1. ENTRANCE	
2. KITCHEN & DINING AREA	2.75 X 2.55M
3. LIVING ROOM	3.25 X 3.35M
4. BEDROOM	3.55 X 3.70M
5. BATHROOM	2.10 X 2.20M
6. LAUNDRY	0.75 X 0.55M
7. BALCONY	5.00 X 2.35M



INTERNAL AREA504 SQ FT

BALCONY AREA135 SQ FT

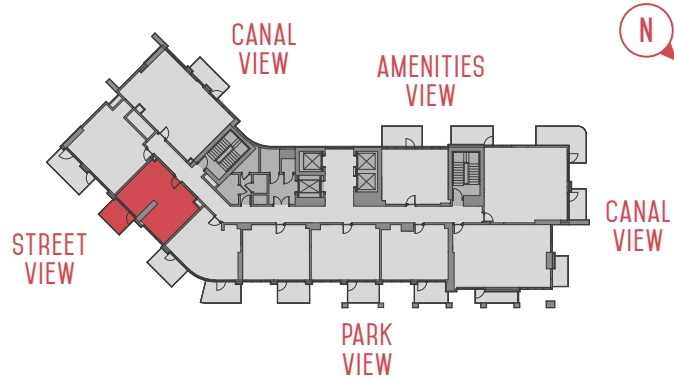
TOTAL AREA639 SQ FT

Disclaimer: All images, plans, features, and specifications are for illustrative purposes only and subject to change without notice. Final details, dimensions, and inclusions may vary. Items shown—such as furniture, appliances, finishes, pools, and landscaping—are not included unless stated. Masterplans and renderings are preliminary and not binding. The Sale and Purchase Agreement and Offering Plan govern final terms. The Developer may substitute materials or components with equal or superior quality at its discretion.

1 BED

TYPE J

1. ENTRANCE	
2. KITCHEN & DINING AREA	2.75 X 2.55M
3. LIVING ROOM	3.25 X 3.35M
4. BEDROOM	3.55 X 3.70M
5. BATHROOM	2.10 X 2.20M
6. LAUNDRY	0.75 X 0.55M
7. BALCONY	3.20 X 2.50M



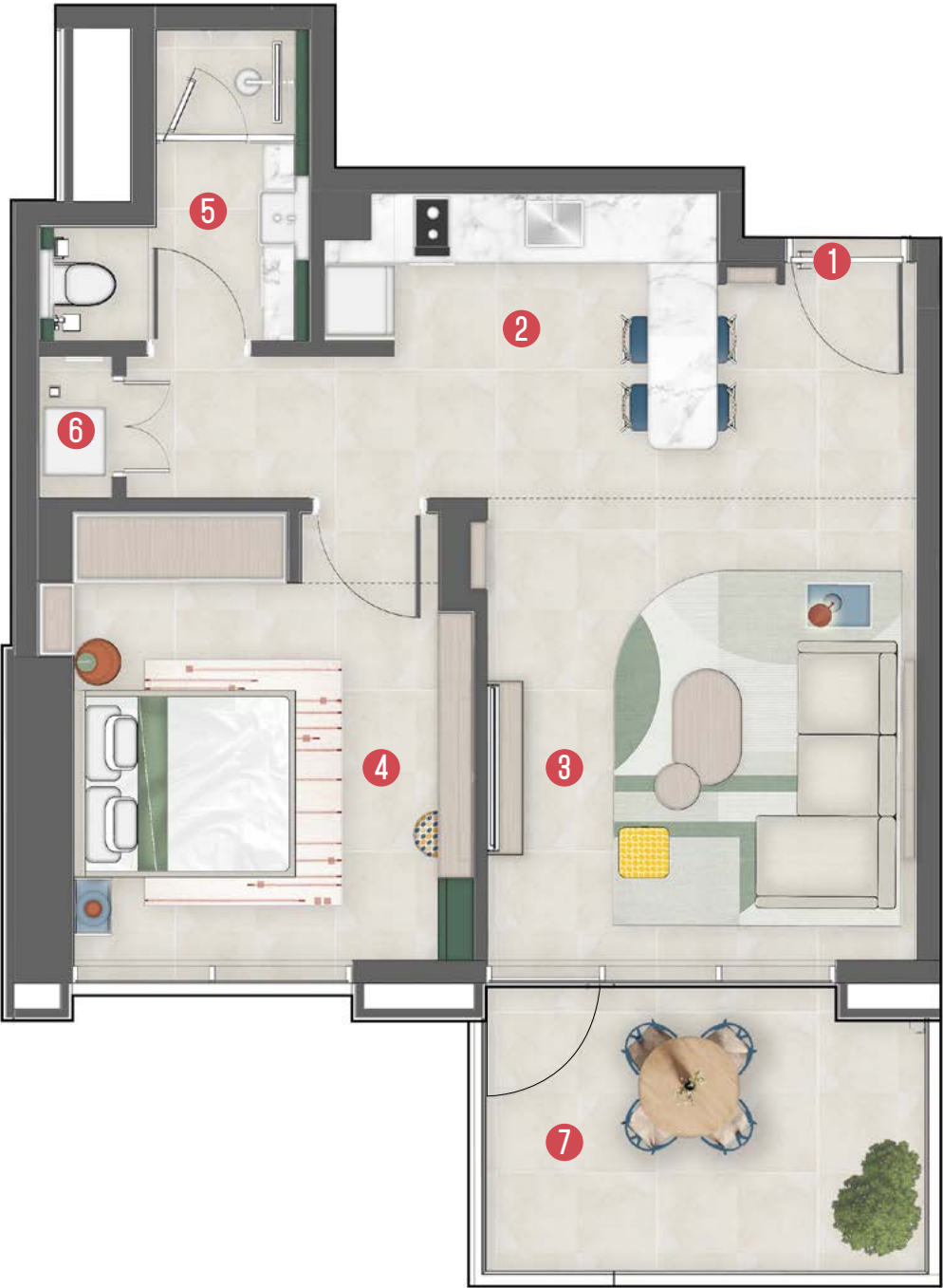
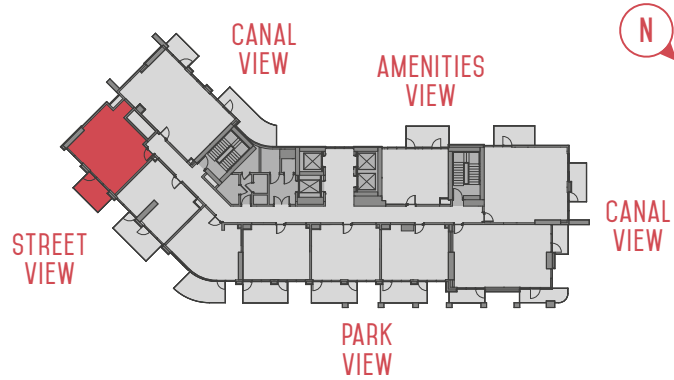
INTERNAL AREA 504 SQ FT BALCONY AREA 86 SQ FT TOTAL AREA 590 SQ FT

Disclaimer: All images, plans, features, and specifications are for illustrative purposes only and subject to change without notice. Final details, dimensions, and inclusions may vary. Items shown—such as furniture, appliances, finishes, pools, and landscaping—are not included unless stated. Masterplans and renderings are preliminary and not binding. The Sale and Purchase Agreement and Offering Plan govern final terms. The Developer may substitute materials or components with equal or superior quality at its discretion.

1 BED

TYPE K

1. ENTRANCE	
2. KITCHEN & DINING AREA	3.40 X 2.65M
3. LIVING ROOM	3.70 X 3.95M
4. BEDROOM	3.45 X 3.85M
5. BATHROOM	2.35 X 2.70M
6. LAUNDRY	0.65 X 1.25M
7. BALCONY	3.80 X 2.50M



INTERNAL AREA 582 SQ FT

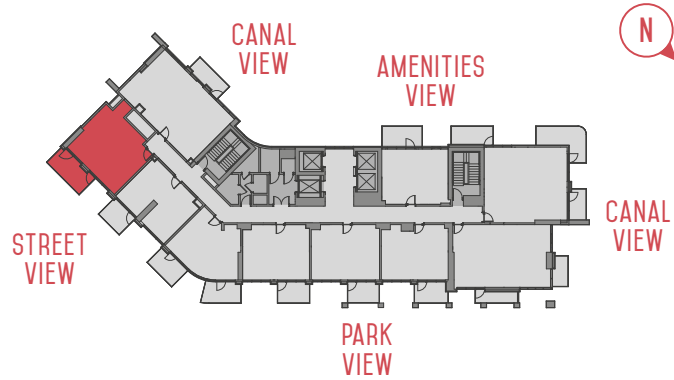
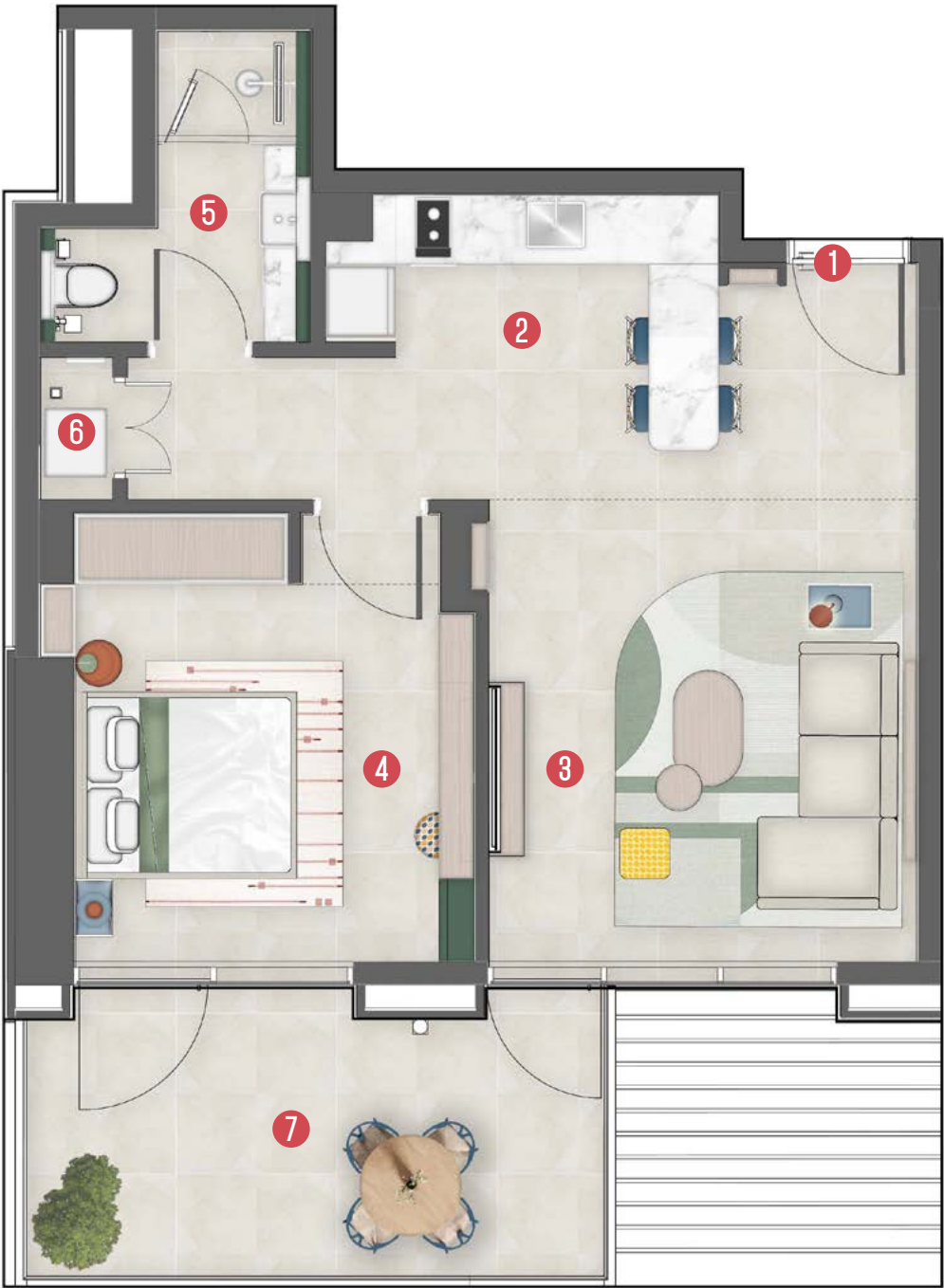
BALCONY AREA 100 SQ FT

TOTAL AREA 682 SQ FT

Disclaimer: All images, plans, features, and specifications are for illustrative purposes only and subject to change without notice. Final details, dimensions, and inclusions may vary. Items shown—such as furniture, appliances, finishes, pools, and landscaping—are not included unless stated. Masterplans and renderings are preliminary and not binding. The Sale and Purchase Agreement and Offering Plan govern final terms. The Developer may substitute materials or components with equal or superior quality at its discretion.

1 BED TYPE L

1. ENTRANCE	
2. KITCHEN & DINING AREA	3.40 X 2.65M
3. LIVING ROOM	3.70 X 3.95M
4. BEDROOM	3.45 X 3.85M
5. BATHROOM	2.35 X 2.70M
6. LAUNDRY	0.65 X 1.25M
7. BALCONY	4.85 X 2.50M

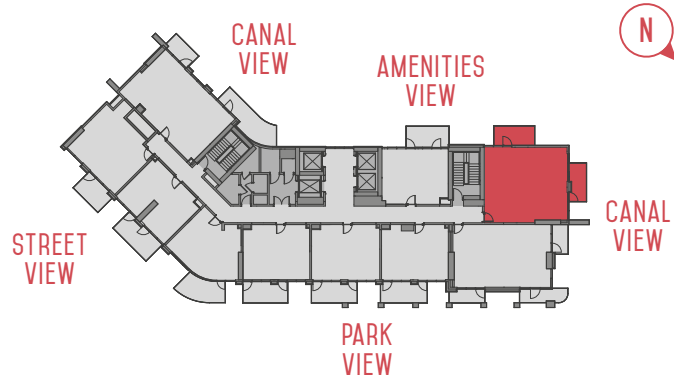
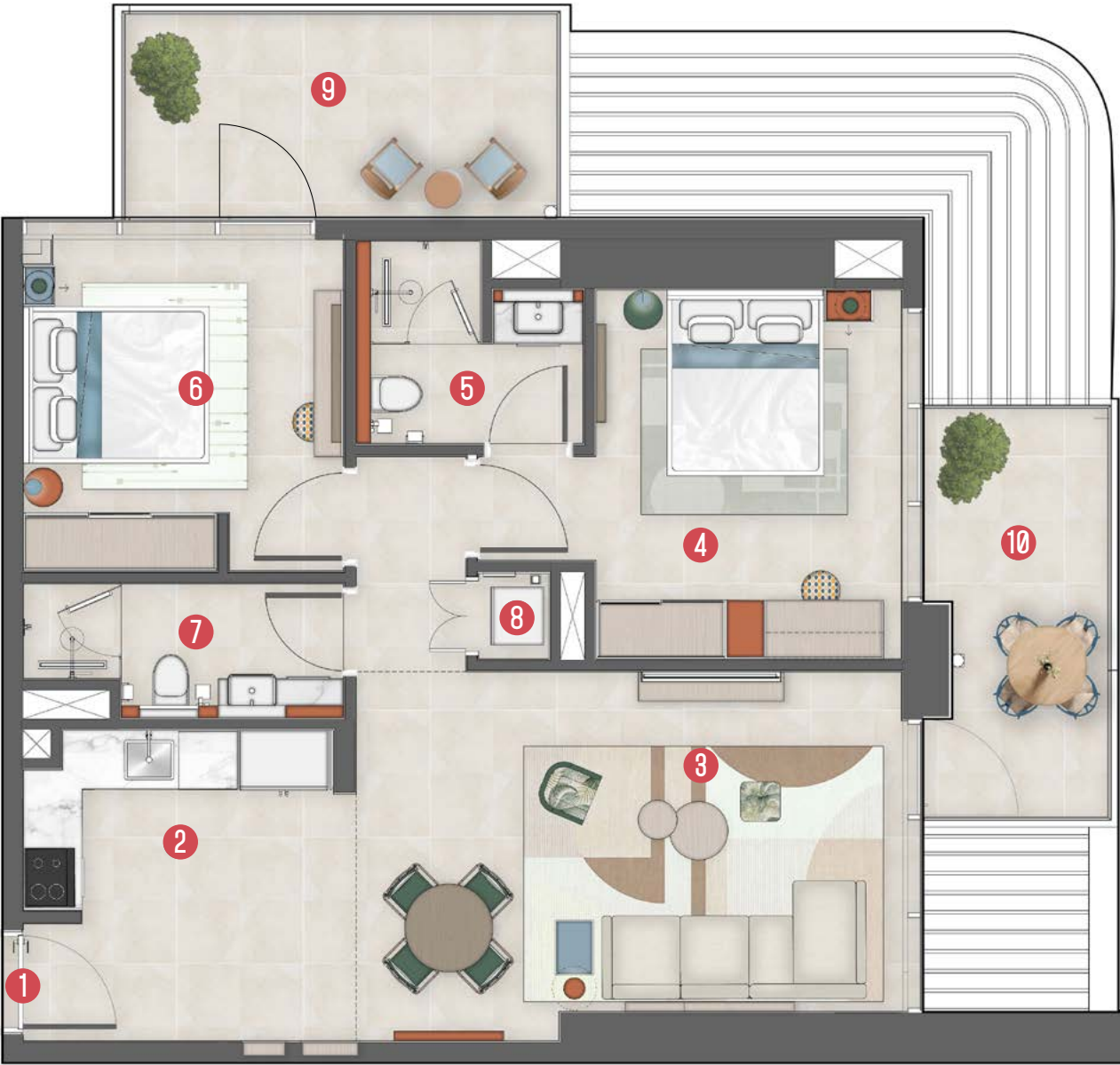


INTERNAL AREA	582 SQ FT	BALCONY AREA	128 SQ FT	TOTAL AREA	710 SQ FT
---------------	-----------	--------------	-----------	------------	-----------

Disclaimer: All images, plans, features, and specifications are for illustrative purposes only and subject to change without notice. Final details, dimensions, and inclusions may vary. Items shown—such as furniture, appliances, finishes, pools, and landscaping—are not included unless stated. Masterplans and renderings are preliminary and not binding. The Sale and Purchase Agreement and Offering Plan govern final terms. The Developer may substitute materials or components with equal or superior quality at its discretion.

2 BED TYPE A

1. ENTRANCE	
2. KITCHEN	3.20 X 1.80M
3. LIVING ROOM & DINING AREA	4.45 X 3.75M
4. MASTER BEDROOM	3.15 X 3.85M
5. MASTER BATHROOM	2.35 X 2.10M
6. BEDROOM	3.30 X 3.40M
7. BATHROOM	3.30 X 1.40M
8. LAUNDRY	0.75 X 0.95M
9. BALCONY 1	4.50 X 2.10M
10. BALCONY 2	1.90 X 4.20M

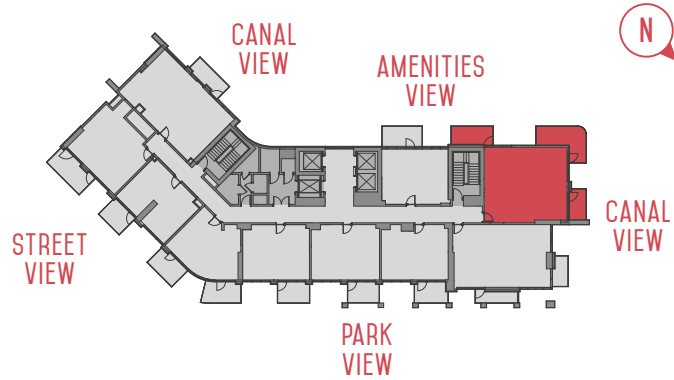
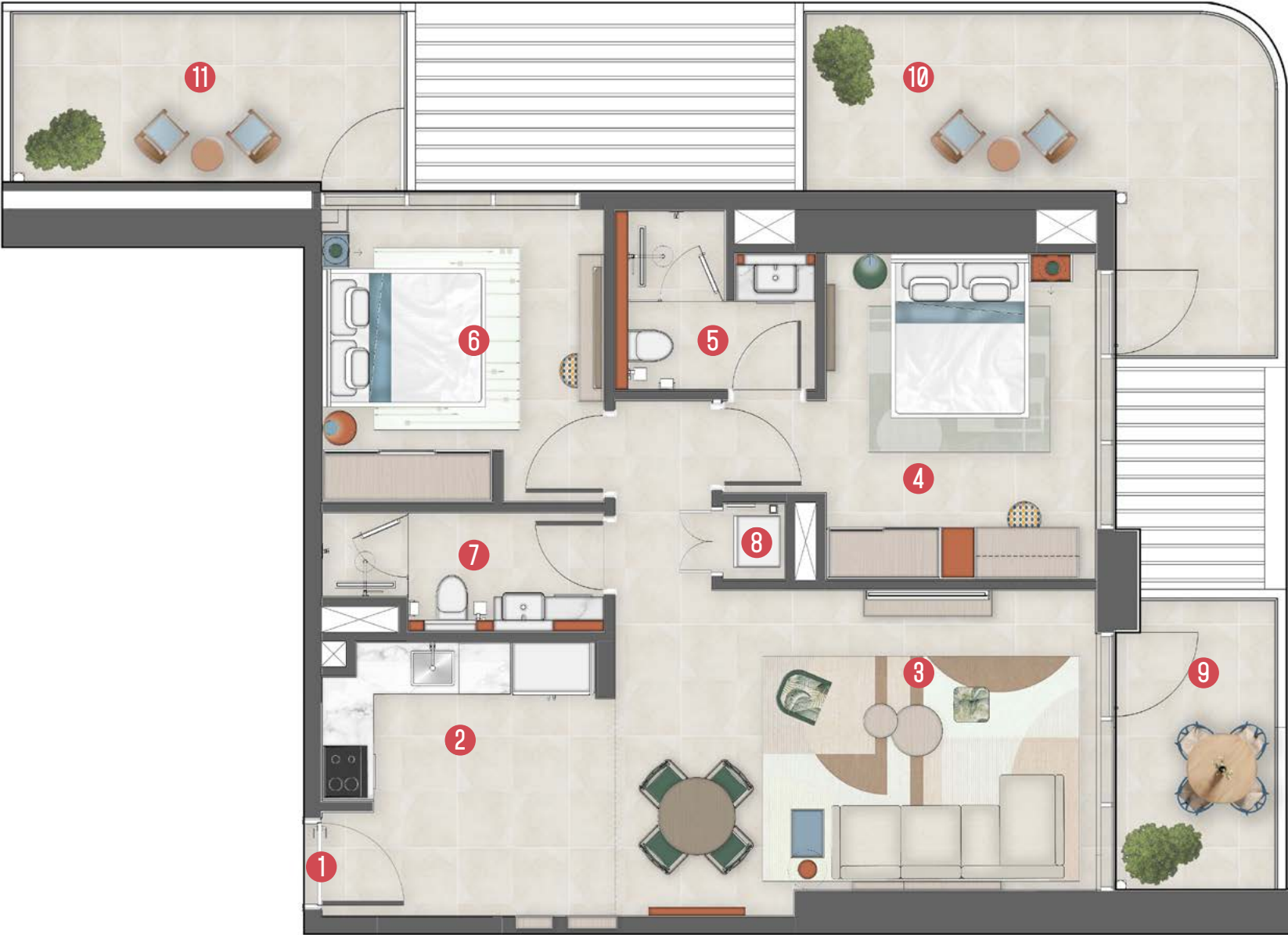


INTERNAL AREA	835 SQ FT	BALCONY AREA	189 SQ FT	TOTAL AREA	1,024 SQ FT
---------------	-----------	--------------	-----------	------------	-------------

Disclaimer: All images, plans, features, and specifications are for illustrative purposes only and subject to change without notice. Final details, dimensions, and inclusions may vary. Items shown—such as furniture, appliances, finishes, pools, and landscaping—are not included unless stated. Masterplans and renderings are preliminary and not binding. The Sale and Purchase Agreement and Offering Plan govern final terms. The Developer may substitute materials or components with equal or superior quality at its discretion.

2 BED TYPE B

1. ENTRANCE	
2. KITCHEN	3.20 X 1.80M
3. LIVING ROOM & DINING AREA	4.45 X 3.75M
4. MASTER BEDROOM	3.15 X 3.85M
5. MASTER BATHROOM	2.35 X 2.10M
6. BEDROOM	3.30 X 3.40M
7. BATHROOM	3.30 X 1.40M
8. LAUNDRY	0.75 X 0.95M
9. BALCONY 1	1.90 X 3.35M
10. BALCONY 2	5.60 X 4.00M
11. BALCONY 3	4.60 X 2.10M



INTERNAL AREA

835 SQ FT

BALCONY AREA

337 SQ FT

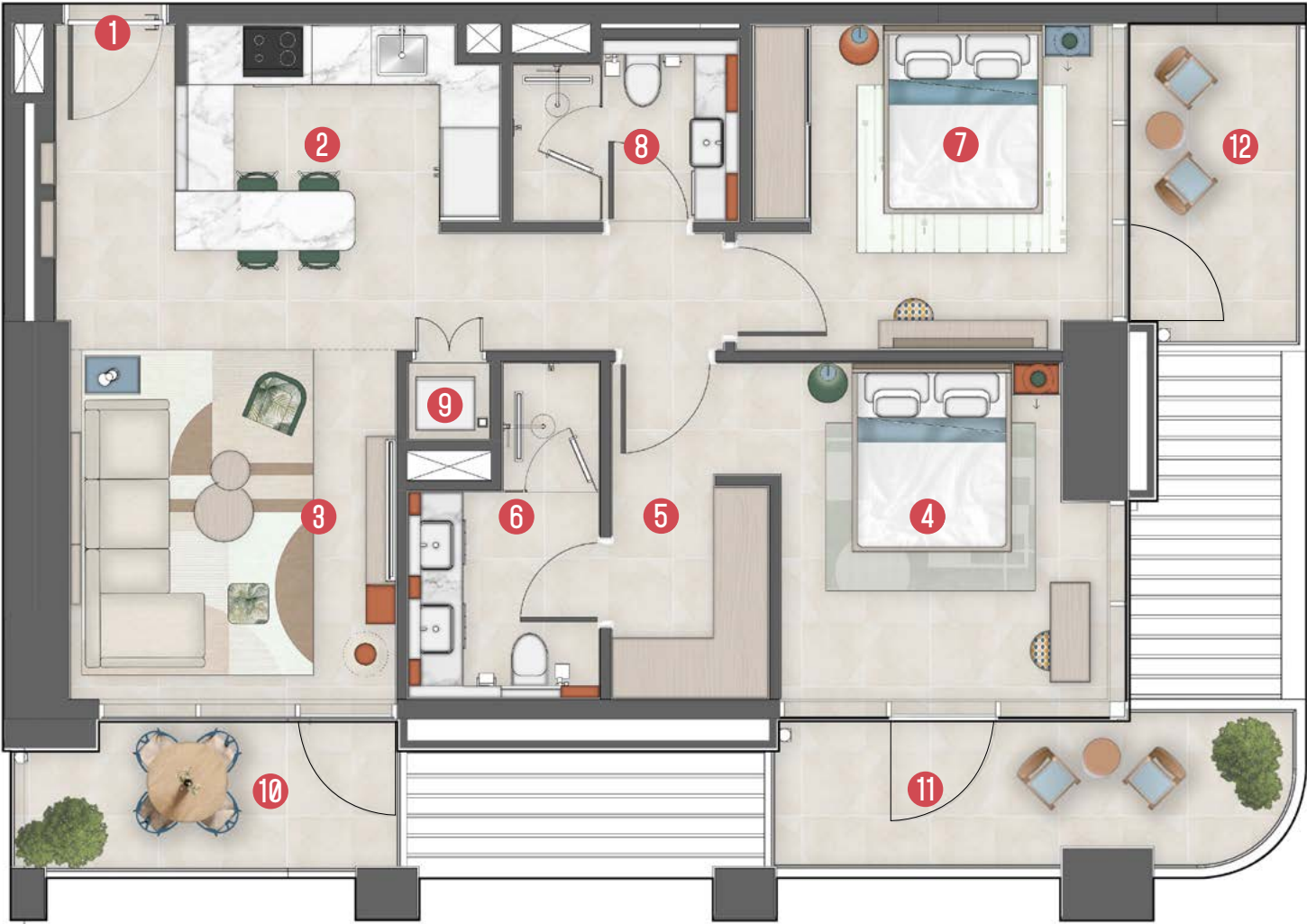
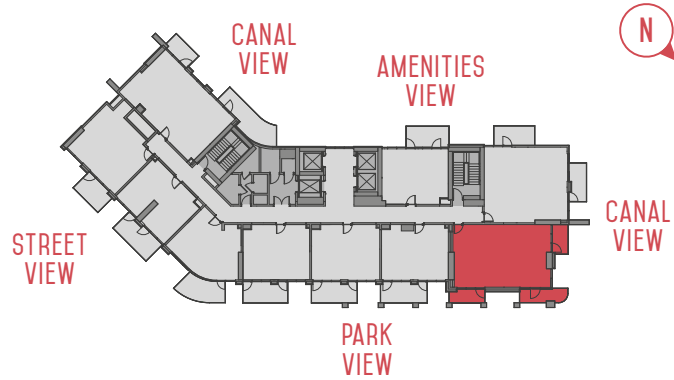
TOTAL AREA

1,172 SQ FT

Disclaimer: All images, plans, features, and specifications are for illustrative purposes only and subject to change without notice. Final details, dimensions, and inclusions may vary. Items shown—such as furniture, appliances, finishes, pools, and landscaping—are not included unless stated. Masterplans and renderings are preliminary and not binding. The Sale and Purchase Agreement and Offering Plan govern final terms. The Developer may substitute materials or components with equal or superior quality at its discretion.

2 BED TYPE C

1. ENTRANCE	
2. KITCHEN & DINING AREA	3.20 X 2.00M
3. LIVING ROOM	3.30 X 3.50M
4. MASTER BEDROOM	3.30 X 3.40M
5. DRESSING AREA	1.60 X 2.15M
6. MASTER BATHROOM	1.95 X 3.40M
7. BEDROOM	3.60 X 3.30M
8. BATHROOM	2.30 X 1.85M
9. LAUNDRY	0.85 X 0.80M
10. BALCONY 1	3.90 X 1.50M
11. BALCONY 2	5.25 X 1.50M
12. BALCONY 3	1.75 X 3.20M

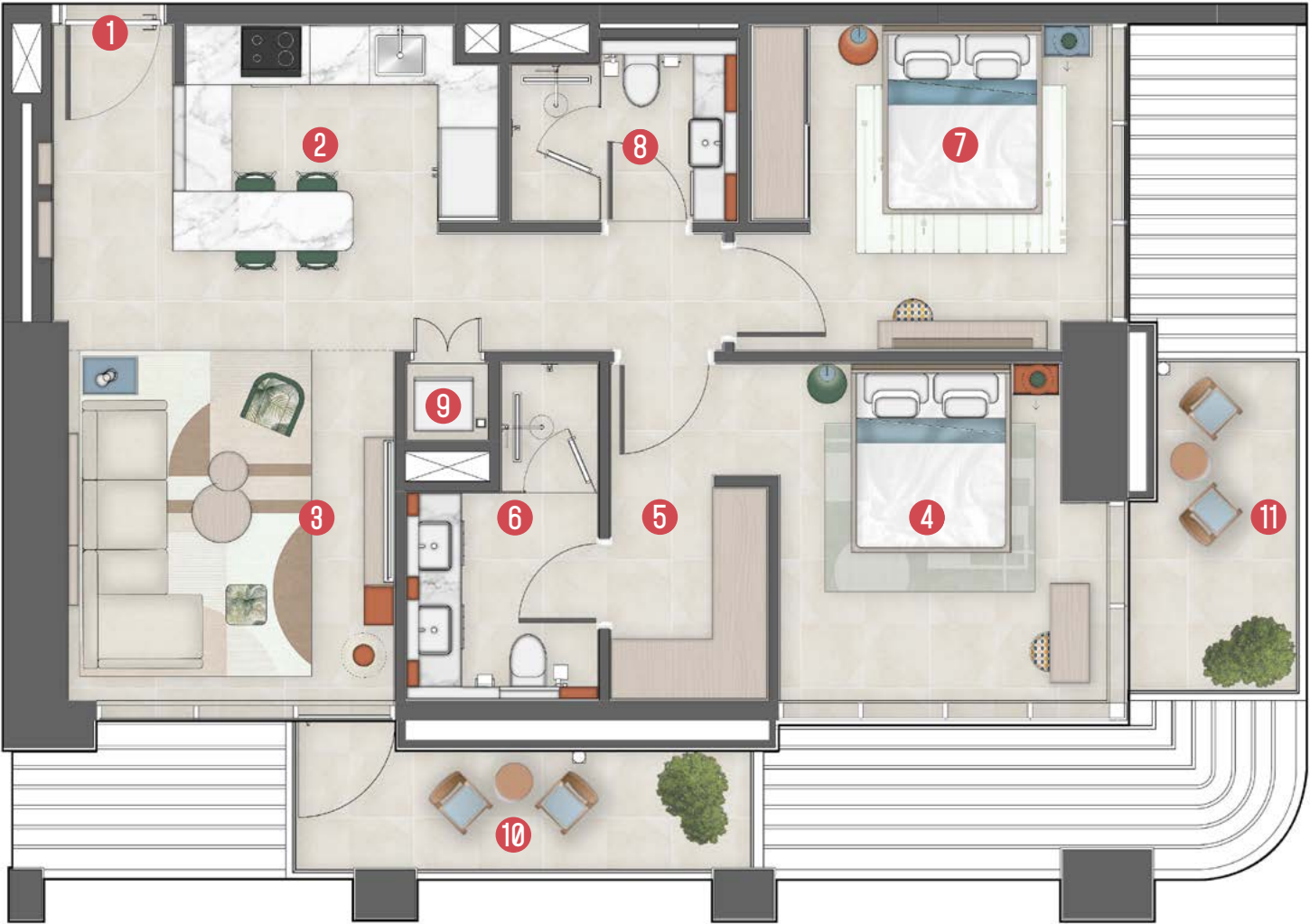
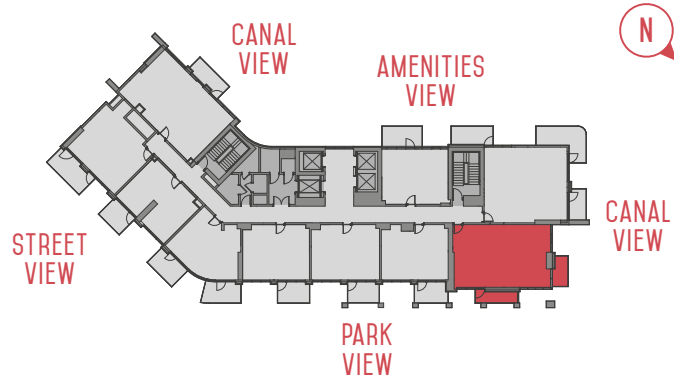


INTERNAL AREA 818 SQ FT BALCONY AREA 206 SQ FT TOTAL AREA 1,024 SQ FT

Disclaimer: All images, plans, features, and specifications are for illustrative purposes only and subject to change without notice. Final details, dimensions, and inclusions may vary. Items shown—such as furniture, appliances, finishes, pools, and landscaping—are not included unless stated. Masterplans and renderings are preliminary and not binding. The Sale and Purchase Agreement and Offering Plan govern final terms. The Developer may substitute materials or components with equal or superior quality at its discretion.

2 BED TYPE D

1. ENTRANCE	
2. KITCHEN & DINING AREA	3.20 X 2.00M
3. LIVING ROOM	3.30 X 3.50M
4. MASTER BEDROOM	3.30 X 3.40M
5. DRESSING AREA	1.60 X 2.15M
6. MASTER BATHROOM	1.95 X 3.40M
7. BEDROOM	3.60 X 3.30M
8. BATHROOM	2.30 X 1.85M
9. LAUNDRY	0.85 X 0.80M
10. BALCONY 1	4.60 X 1.20M
11. BALCONY 2	1.75 X 3.35M



INTERNAL AREA

818 SQ FT

BALCONY AREA

124 SQ FT

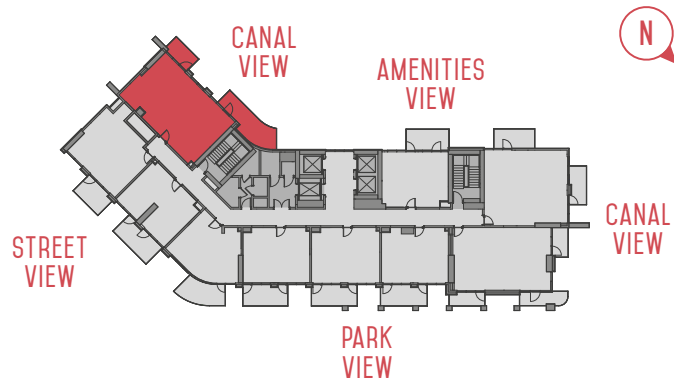
TOTAL AREA

942 SQ FT

Disclaimer: All images, plans, features, and specifications are for illustrative purposes only and subject to change without notice. Final details, dimensions, and inclusions may vary. Items shown—such as furniture, appliances, finishes, pools, and landscaping—are not included unless stated. Masterplans and renderings are preliminary and not binding. The Sale and Purchase Agreement and Offering Plan govern final terms. The Developer may substitute materials or components with equal or superior quality at its discretion.

2 BED TYPE E

1. ENTRANCE	
2. KITCHEN & DINING AREA	3.50 X 2.95M
3. LIVING ROOM	3.90 X 3.75M
4. MASTER BEDROOM	3.30 X 3.65M
5. DRESSING AREA	2.20 X 1.35M
6. MASTER BATHROOM	2.50 X 1.70M
7. BEDROOM	3.30 X 3.65M
8. BATHROOM	2.45 X 1.70M
9. LAUNDRY	0.70 X 1.00M
10. BALCONY 1	7.45 X 2.10M
11. BALCONY 2	3.50 X 1.90M



INTERNAL AREA 852 SQ FT

BALCONY AREA 273 SQ FT

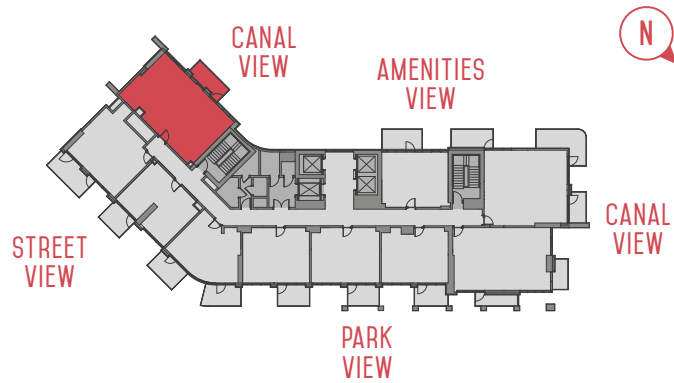
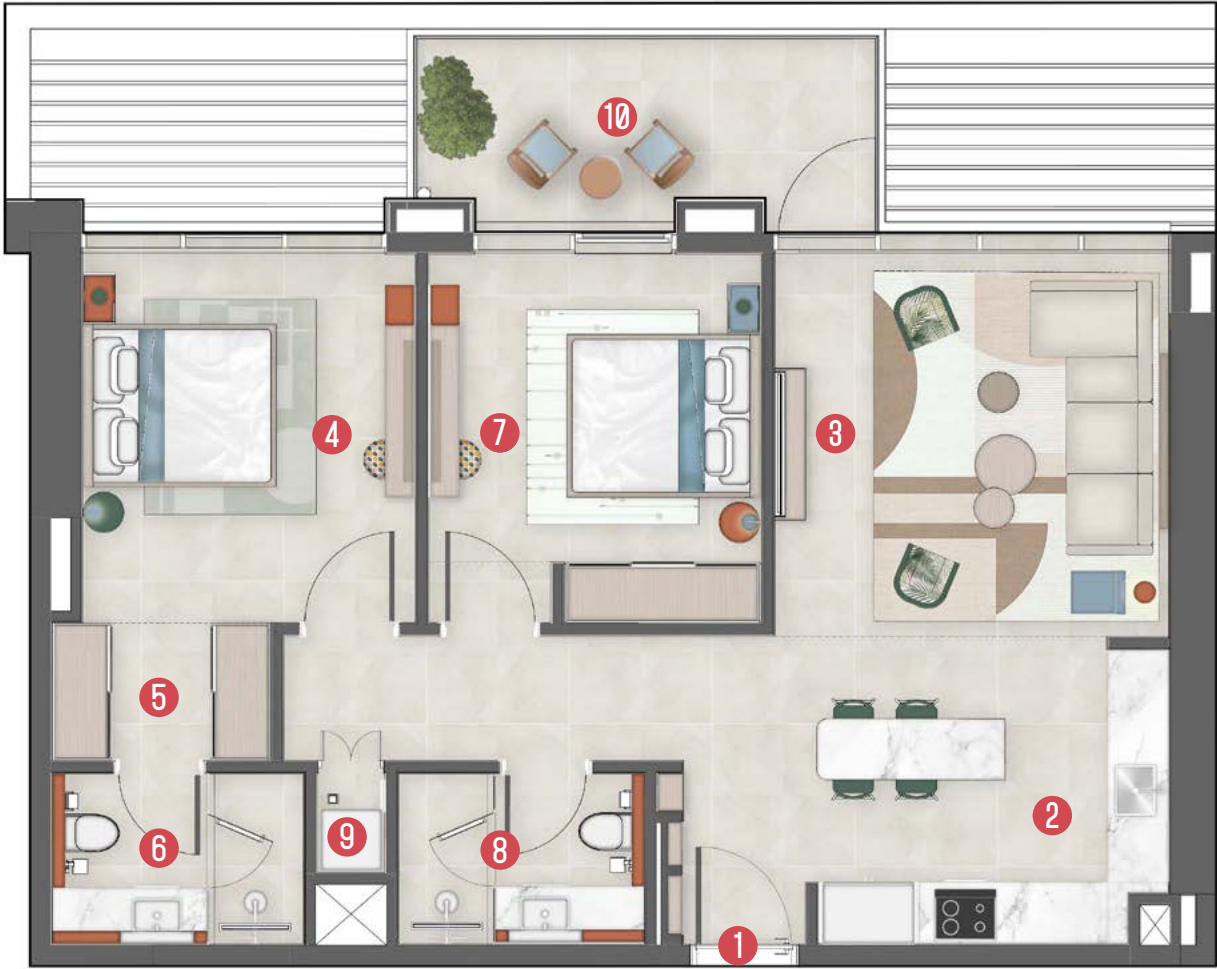
TOTAL AREA 1,125 SQ FT

Disclaimer: All images, plans, features, and specifications are for illustrative purposes only and subject to change without notice. Final details, dimensions, and inclusions may vary. Items shown—such as furniture, appliances, finishes, pools, and landscaping—are not included unless stated. Masterplans and renderings are preliminary and not binding. The Sale and Purchase Agreement and Offering Plan govern final terms. The Developer may substitute materials or components with equal or superior quality at its discretion.

2 BED

TYPE F

1. ENTRANCE	
2. KITCHEN & DINING AREA	3.50 X 2.95M
3. LIVING ROOM	3.90 X 3.75M
4. MASTER BEDROOM	3.30 X 3.65M
5. DRESSING AREA	2.20 X 1.35M
6. MASTER BATHROOM	2.50 X 1.70M
7. BEDROOM	3.30 X 3.65M
8. BATHROOM	2.45 X 1.70M
9. LAUNDRY	0.70 X 1.00M
10. BALCONY 1	4.50 X 1.90M



INTERNAL AREA 852 SQ FT

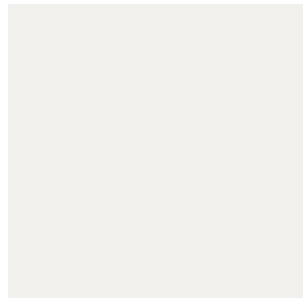
BALCONY AREA 90.42 SQ FT

TOTAL AREA 943 SQ FT

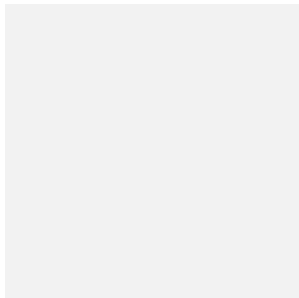
Disclaimer: All images, plans, features, and specifications are for illustrative purposes only and subject to change without notice. Final details, dimensions, and inclusions may vary. Items shown—such as furniture, appliances, finishes, pools, and landscaping—are not included unless stated. Masterplans and renderings are preliminary and not binding. The Sale and Purchase Agreement and Offering Plan govern final terms. The Developer may substitute materials or components with equal or superior quality at its discretion.

MATERIALS & FINISHES

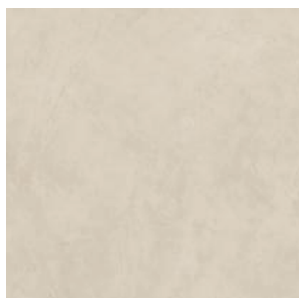
TYPICAL APARTMENTS



WALLS & CEILING PAINT
RAL 9016



HVAC POWDER COATING
RAL 9016



FLOORING & BATHROOM
PORCELAIN TILE
PRISM CORD



COUNTER RECON STONE
BRONZE RIVERS



KITCHEN & WARDROBE
LAMINATE
OAK



KITCHEN LAMINATE
HORIZON



STAINLESS STEEL
BRUSHED



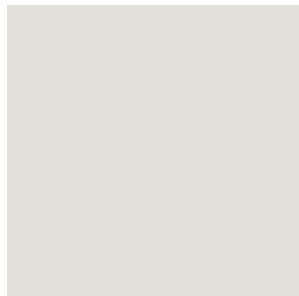
BEDROOM RUG



LIVING ROOM RUG



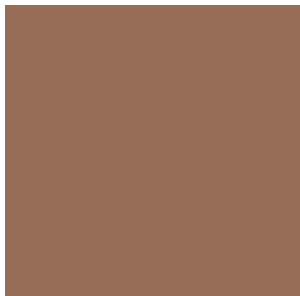
ACCENT TILES BATHROOM
COLOR 2.0



INTERNAL DOOR
LAMINATE
BEIGE NATURA



JOINERY LAMINATE
REED GREEN

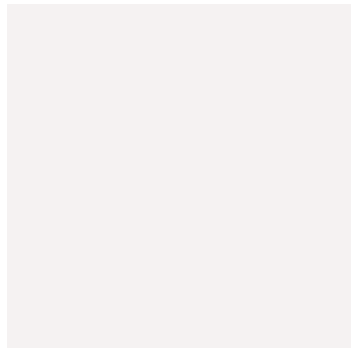


JOINERY LAMINATE
BRIQUE

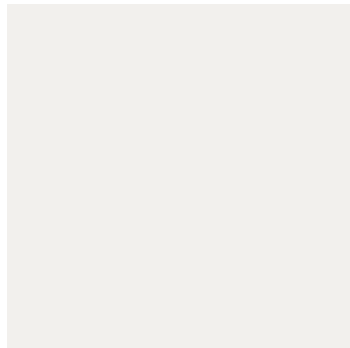


FABRICS

PUBLIC AREAS



HVAC POWDER COATING
RAL 9016



WALLS & CEILING PAINT
RAL 9016



DECORATIVE PLASTER



JOINERY LAMINATE
OAK



COUNTER & TABLE
RECON STONE
BRONZE RIVERS



ACRYLIC
PEACH



ACOUSTIC CEILING



ACCENT TILES
COLOR 2.0



MICRO CONCRETE
NCS 7010-G50Y



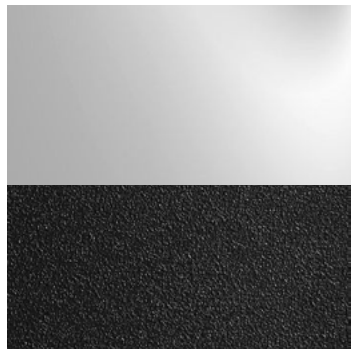
FLOORING
PORCELAIN TILE
PRISM CORD



MICRO CONCRETE
RAL 8003



JOINERY LAMINATE
HORIZON



METAL
STAINLESS STEEL &
POWDER COATED BLACK



RUGS



RUGS



FABRICS



FABRICS



JOINERY LAMINATE
REED GREEN &
LIGHT GREEN

LIVING & DINING



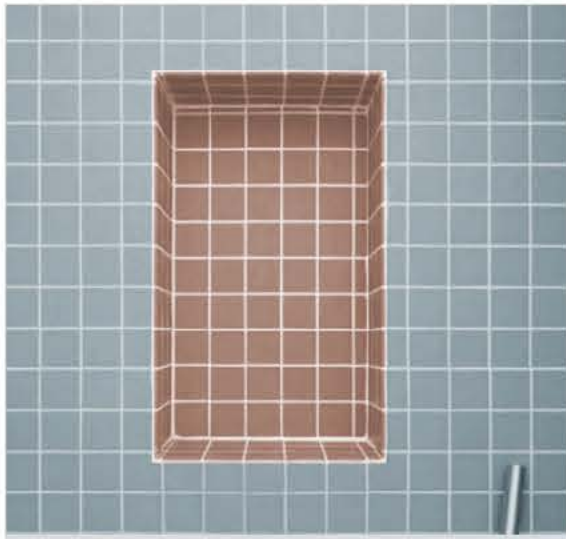
KITCHEN



BEDROOMS



BATHROOMS





ROVE BRAND SERVICES

24/7 CONCIERGE

RECEPTION

ROVE CONNECT

À LA CARTE SERVICES



HOME &
PROPERTY SERVICES

- HOUSEKEEPING
- LAUNDRY,
DRY-CLEANING &
ALTERATION
- VACANT HOME
MAINTENANCE &
ENGINEERING
SERVICES
- FLORIST SERVICES



PERSONAL &
LIFESTYLE ASSISTANCE

- PERSONAL SERVICES
(FROM FITNESS
TO SHOPPING)
- CHILDCARE &
NURSING SERVICES
- ASSISTANT/
SECRETARIAL



CULINARY &
DINING

- CHEF SERVICES
- FOOD & BEVERAGE
SERVICES



TRAVEL, EVENTS &
EXPERIENCES

- AIR & LAND
TRANSPORTATION
- TOUR BOOKINGS
- ACCOMMODATION,
STORAGE &
EVENT SPACES





ROVE HOME CONNECT

Rove Home owners enjoy:

Discounts on stays at Rove Hotels

Preferential dining rates across Rove properties

Privileged access to events across Rove locations

Dedicated customer care

First access to new Rove Home launches and exclusive owners-only programs

Rove Home residents enjoy:

Significant discounts on stays at Rove Hotels

Preferential dining rates across Rove properties

Complimentary access to community spaces

PAYMENT PLAN

20%

1st PAYMENT
Down payment*

5%

5th PAYMENT
50% construction completion

5%

2nd PAYMENT
6 months from booking date

5%

6th PAYMENT
60% construction completion

5%

3rd PAYMENT
12 months from booking date

5%

7th PAYMENT
70% construction completion

5%

4th PAYMENT
40% construction completion

50%

8th PAYMENT
On completion / handover

*DLD + admin fees apply

ALAIN

Since 1996, ALAIN has shaped the future of the UAE through purposeful investments in real estate, hospitality, education and capital.

Guided by integrity and a long-term vision, we remain committed to creating sustainable spaces that enrich lives and foster enduring value for generations to come.

Together, Rove and ALAIN bring fresh energy, unmatched quality and a new benchmark for inspired urban living.



LIFE ON THE BRIGHT SIDE



DISCLAIMER: All images, plans, features, and specifications are for illustrative purposes only and subject to change without notice. Final details, dimensions, and inclusions may vary. Items shown—such as furniture, appliances, finishes, pools, and landscaping—are not included unless stated. Masterplans and renderings are preliminary and not binding. The Sale and Purchase Agreement and Offering Plan govern final terms. The Developer may substitute materials or components with equal or superior quality at its discretion.

Rove Home Meydan Horizon_20251203

R O V E
HOME
MEYDAN HORIZON

DEVELOPED BY
ALAIN

800 11 44 | alainam.ae | sales@alainam.ae

